

# New York

## New York Treats Working-Poor and Near-Poor Families Under Its Income Tax Better Than Most States

### New York's 2006 income tax threshold

Rank among the 42 states with income taxes

(The income level at which families begin paying income tax)

(1 = lowest threshold)

- For single-parent families of three: \$32,500 41
- For two-parent families of four: \$36,300 41

### New York's 2006 income tax levied on working-poor and near-poor families

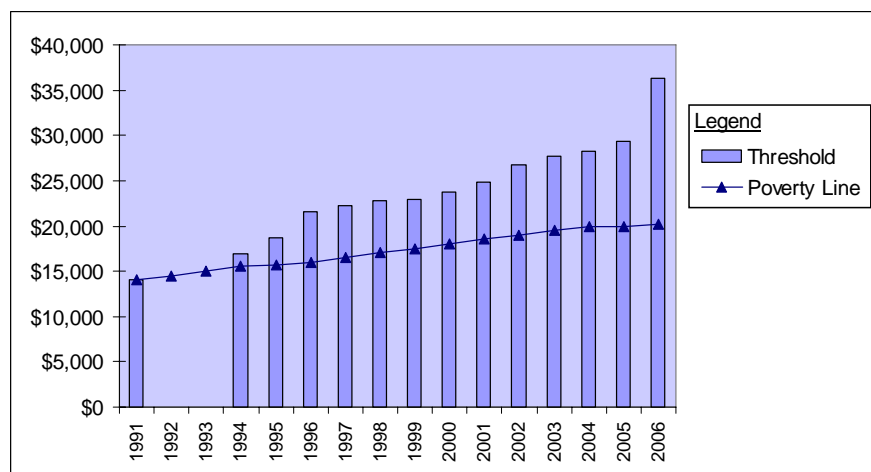
Rank (1 = highest tax)

- For families of three with incomes at the poverty line (\$16,079): \$1,375 refund 42
- For families of four with incomes at the poverty line (\$20,615): \$1,436 refund 41
- For families of three with minimum-wage earnings (\$14,036): \$1,500 refund 42
- For families of three with incomes at 125% of poverty line (\$20,099): \$1,248 refund 41
- For families of four with incomes at 125% of poverty line (\$25,769): \$1,103 refund 41

### New York has consistently exempted families with below-poverty earnings from its income tax.

- Since 1991, New York's income tax threshold for families of four has grown from 1 percent above the poverty line to 76 percent above the poverty line.
- New York's Earned Income Tax Credit and its new Child Tax Credit provide one-parent families of three at the poverty line a tax refund of \$1,375 to help them work their way out poverty — the largest refund in the country for such families.

#### Income Tax Threshold for Family of Four



Year	Threshold
1991	\$14,000
1992	no data
1993	no data
1994	\$16,900
1995	\$18,700
1996	\$21,600
1997	\$22,300
1998	\$22,800
1999	\$23,000
2000	\$23,800
2001	\$24,900
2002	\$26,800
2003	\$27,700
2004	\$28,200
2005	\$29,300
2006	\$36,300