

Making High-Poverty Schools Hunger Free

COMMUNITY ELIGIBILITY

The new community eligibility provision within the National School Lunch and School Breakfast Programs allows schools in high-poverty areas to offer nutritious meals to all students at no charge. Community eligibility is a proven tool to make sure children in high-poverty schools are fueled up and ready to learn.

POTENTIAL REACH



Nearly **16 million American children**

live in households that struggle against hunger.



More than **28,000 high-poverty schools**

can now offer meals at no charge to all students; that's more than one in five schools nationwide.

WHO IT HELPS



LOW-INCOME CHILDREN

They can count on getting healthy meals at school without any stigma.



FAMILIES

Parents can count on their children getting two nutritious meals at school each day.



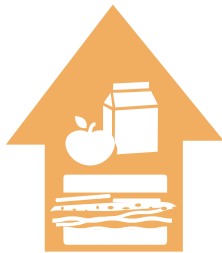
SCHOOLS

Research shows that increasing school breakfast participation not only improves students' diets, but also their behavior and achievement.

WE KNOW IT WORKS

Community eligibility has been rolled out in 11 states and becomes available nationwide for the 2014-2015 school year. The program frees up resources and staff that can be devoted to other educational priorities.

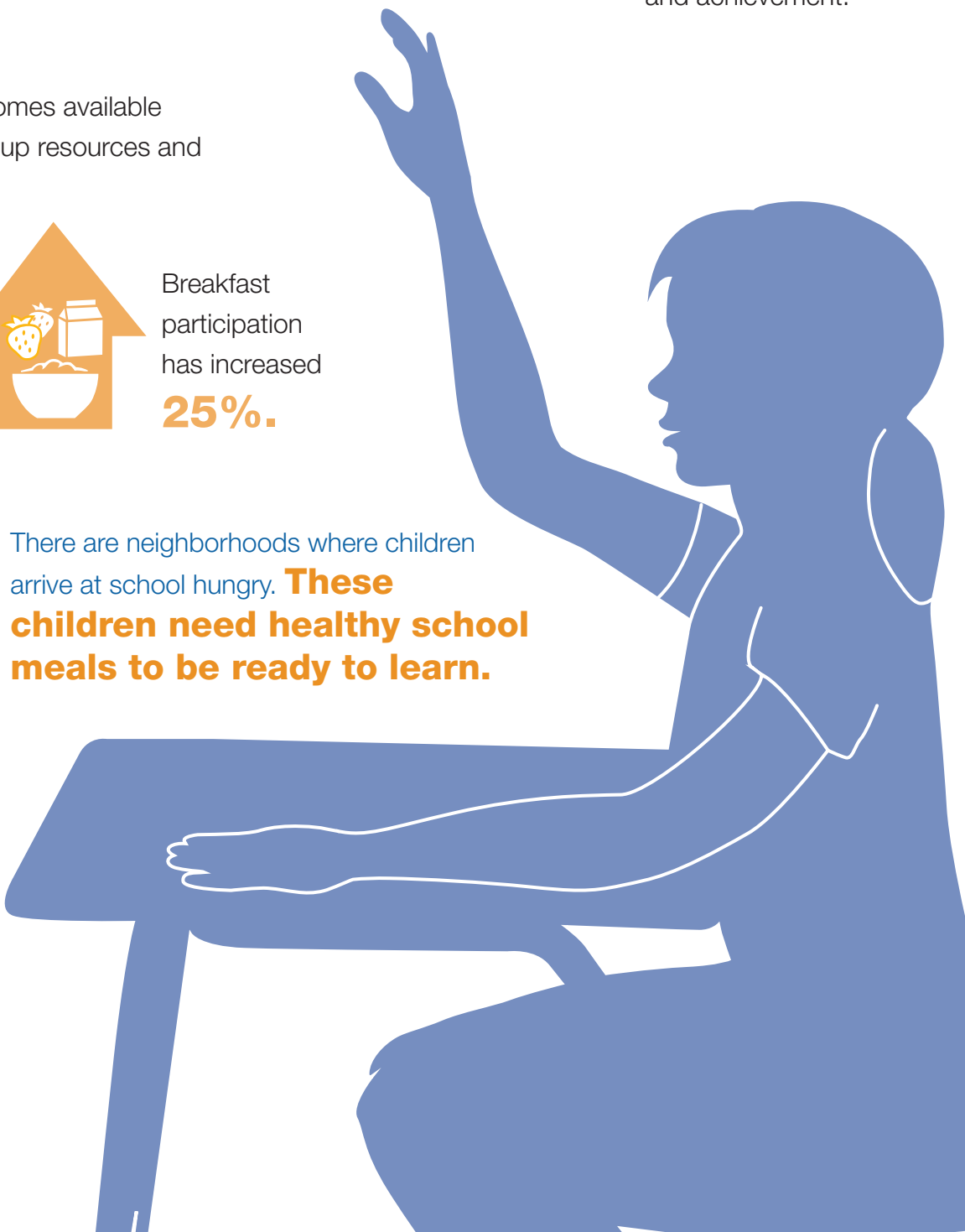
About **4,000 schools** already successfully offer community eligibility.



Lunch participation has risen by **13%.**



Breakfast participation has increased **25%.**



There are neighborhoods where children arrive at school hungry. **These children need healthy school meals to be ready to learn.**

HOW COMMUNITY ELIGIBILITY WORKS

- Schools **do not process** meal applications or collect fees.
- Schools **do not have to track eligibility** in the lunch line. Schools **just count the total number** of breakfasts and lunches they serve.
- Schools are **reimbursed based on highly reliable data** from other programs that identify which students are low-income or at risk of hunger.
- School districts **can use community eligibility** in individual schools, a group of schools, or district-wide.
- Once a district chooses community eligibility, **it is guaranteed eligibility for four years** with no decline in its reimbursement rate.

For more information about community eligibility go to:
www.cbpp.org/childnutrition or
www.frac.org/community-eligibility or
www.fns.usda.gov/school-meals/community-eligibility-provision