

# Utah

## Some Families in Utah with Income Just Below the Poverty Line Are Subject to the Income Tax

**Utah's 2001 income tax threshold — the income level at which families begin paying income tax:**

*Ranking among 42 states with income taxes*

- ☛ For two-parent families of four: **\$16,300.** **16<sup>th</sup> lowest**
- ☛ For single-parent families of three: **\$13,200.** **16<sup>th</sup> lowest**

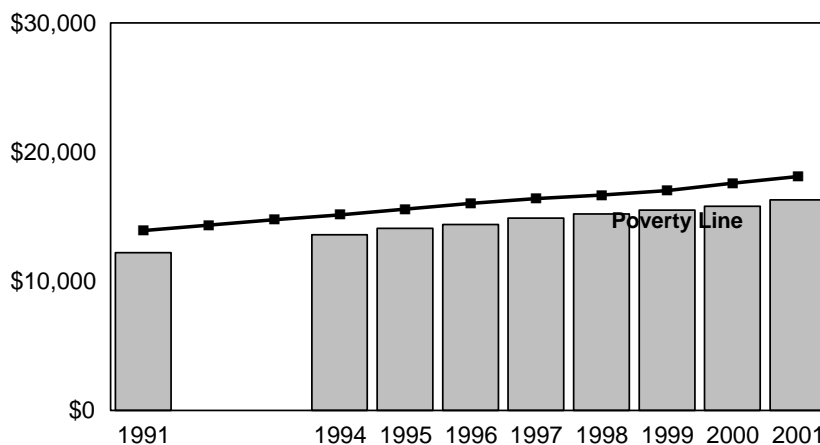
**Utah's 2001 income tax on working-poor and near-poor families:**

- ☛ For families of four with *incomes at the poverty line* (\$18,104): **\$43.** **19<sup>th</sup> highest**
- ☛ For families of three with *incomes at the poverty line* (\$14,129): **\$22.** **15<sup>th</sup> highest**
- ☛ No tax on families of three or four with *full-time minimum wage earnings* (\$10,712).
- ☛ For families of three with *incomes at 125% of poverty line* (\$17,661): **\$141.** **18<sup>th</sup> highest**
- ☛ For families of four with *incomes at 125% of poverty line* (\$22,630): **\$229.** **21<sup>st</sup> highest**

**In 2002, Utah will exempt from income tax families with incomes below the poverty line.**

- ☛ In 1991, a family of four owed tax when its income exceeded 88 percent of the poverty line. For 2000, Utah's tax threshold is 90 percent of the poverty line.
- ☛ A law passed in 2001 will increase the threshold above the poverty line in tax year 2002.

**Income Tax Threshold for Family of Four**



Year	Threshold
1991	\$12,200
1994	\$13,600
1995	\$14,100
1996	\$14,400
1997	\$14,900
1998	\$15,200
1999	\$15,500
2000	\$15,800
2001	\$16,300