

# Kansas

## Kansas Treats Working-Poor and Near-Poor Families Under Its Income Tax Better Than Most Other States

### Kansas's 2006 income tax threshold

Rank among the 42 states with income taxes

(The income level at which families begin paying income tax)

(1 = lowest threshold)

- For single-parent families of three: \$24,400 32
- For two-parent families of four: \$26,100 30

### Kansas's 2006 income tax levied on working-poor and near-poor families

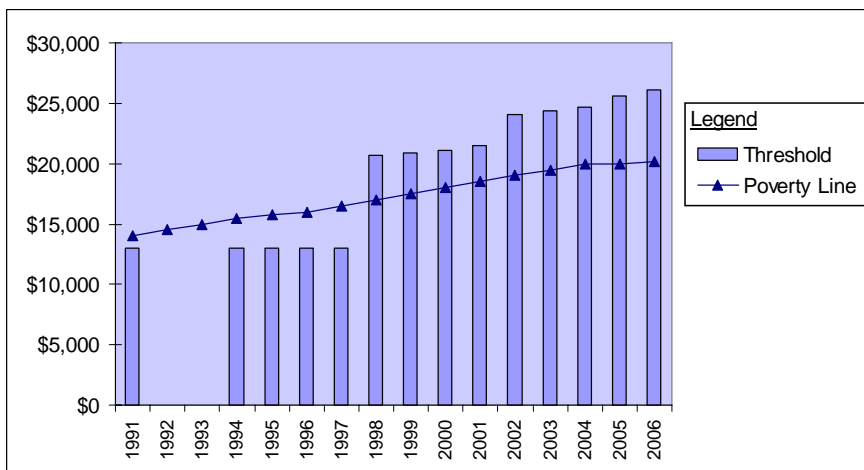
Rank (1 = highest tax)

- For families of three with incomes at the poverty line (\$16,079): \$551 refund 35
- For families of four with incomes at the poverty line (\$20,615): \$363 refund 35
- For families of three with minimum-wage earnings (\$10,712): \$644 refund 35
- For families of three with incomes at 125% of poverty line (\$20,099): \$284 refund 37
- For families of four with incomes at 125% of poverty line (\$25,769): \$20 refund 37

### Since 1998, Kansas has exempted families with below-poverty earnings from the income tax.

- Kansas' threshold increased from a low of 21 percent below the poverty line in 1997 to 27 percent above the poverty line in 2006.
- Kansas also provides a refundable Earned Income Tax Credit to help poor families work their way out of poverty. At \$372, Kansas' refund for families of four at the poverty line is among the top eight in the nation.

### Income Tax Threshold for Family of Four



Year	Threshold
1991	\$13,000
1992	no data
1993	no data
1994	\$13,000
1995	\$13,000
1996	\$13,000
1997	\$13,000
1998	\$20,700
1999	\$20,900
2000	\$21,100
2001	\$21,500
2002	\$24,100
2003	\$24,400
2004	\$24,700
2005	\$25,600
2006	\$26,100